

Technical data



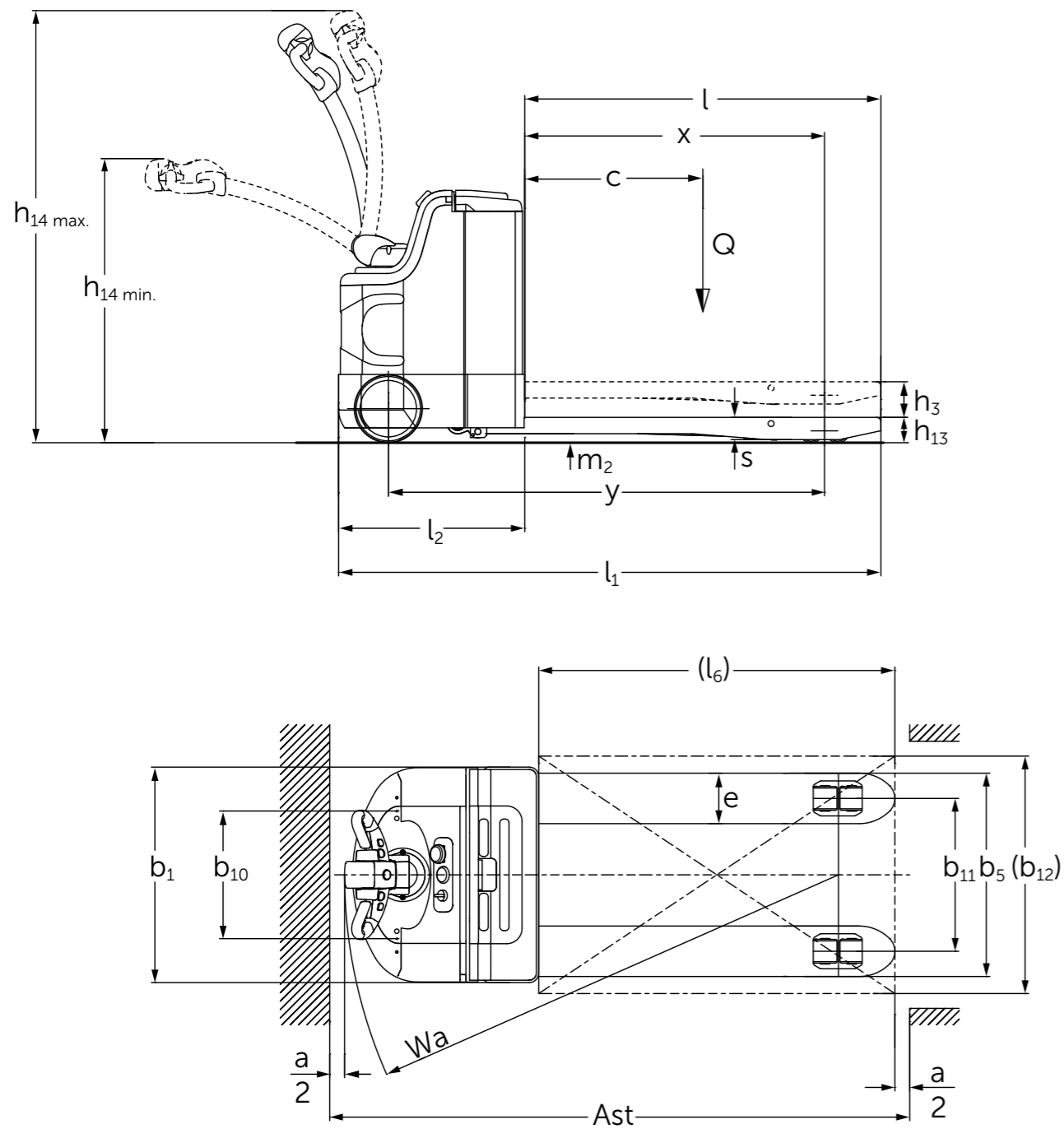
CBD 20

Electric pedestrian truck (2,000 kg)

The CBD 20 is an entry-level model of the electric pedestrian pallet trucks. Intended for easy applications in the internal material flow and thanks to its compact design, it is suited for operations in narrow spaces. The maintenance-free battery in combination with an on-board charger as part of the standard version ensure particularly easy handling. In addition, the maintenance-free AC motor ensures efficient operation.

Technical data in line with VDI 2198

Issue: 12/2018



Identification	1.2	Model		CBD20-150GJH
	1.3	Drive		Electrics
	1.4	Manual, pedestrian, stand-on, seated, order picker operation		Pedestrian
	1.5	Load capacity/rated load	Q t	2.0
	1.6	Load centre distance	c mm	600
Weights	1.8	Load distance	x mm	960
	1.9	Wheelbase	y mm	1,418
	2.1.1	Net weight incl. battery (see row 6.5)	kg	410
Wheels/ chassis	2.2	Axle load, w. load, front/rear	kg	810/1600
	2.3	Axle load, w.o. load, front/rear	kg	310/100
	3.1	Tyres		PU
	3.2	Tyre size, at front	mm	Ø 228x75
	3.3	Tyre size, at rear	mm	Ø 80x80
	3.4	Additional wheels (dimensions)	mm	Ø 90x48
	3.5	Wheels, number front/rear (x = driven wheels)		1x+2/4
Basic dimensions	3.6	Track width, front	b10 mm	474
	3.7	Track width, rear	b11 mm	380/515
	4.4	Lift	h3 mm	120
	4.9	Height of tiller in drive position min. / max.	h14 mm	825/1,370
	4.15	Lowered height	h13 mm	85
	4.19	Overall length	l1 mm	1,780
	4.20	Length incl. back of forks	l2 mm	630
	4.21	Total width	b1/b2 mm	726
	4.22	Fork dimensions	s/e/l mm	73/170/1,150
	4.25	Width over forks	b5 mm	550/685
	4.32	Floor clearance centre wheelbase	m2 mm	30
4.33	Aisle width for pallets 1000 × 1200 sideways	Ast mm	2,030	
4.34	Aisle width for pallets 800 × 1200 lengthways	Ast mm	2,080	
4.35	Turning radius	Wa mm	1,640	
Performance data	5.1	Travel speed, w./w.o. load	km/h	3.5/4
	5.2	Lift speed, w./w.o. load	m/s	0.03/0.035
	5.3	Lowering speed, w./w.o. load	m/s	0.04/0.035
	5.8	Max. gradeability, laden/unladen	%	5/7
	5.10	Service brake		Electromagnetic
Electrics	6.1	Drive motor, output S2 60 min.	kW	1.5
	6.2	Lift motor, output at S3 15%	kW	1.2
	6.4	Battery voltage/nominal capacity K5	V/Ah	24/150
	6.5	Battery weight	kg	120
Misc.	8.1	Type of drive control		AC Speed Control



Jungheinrich trucks
conform to the European
Safety Requirements.

Jungheinrich Lift Truck Singapore Pte Ltd

7 Joo Koon Way,
Singapore 628945

Tel.: +65 6558 7600
Fax.: +65 6558 7611

info@ameise.com.sg
www.ameise.com.sg